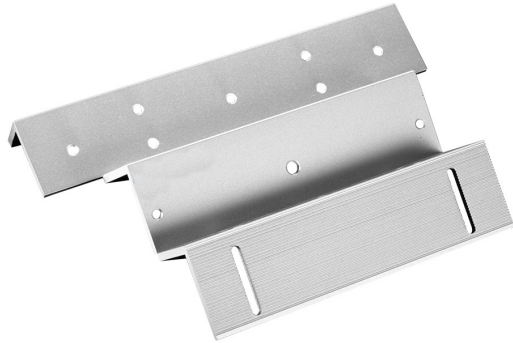


# ASF500ZL

## Magnetic Lock Bracket



- Aluminum shell with high strength alloy material
- Used for the installation and fixing of magnetic locks

### Technical Specification

#### Basic

Casing Material	Aluminum alloy
-----------------	----------------

#### General

Gross Weight	1.30 kg (2.87 lb)
--------------	-------------------

Supported Models	ASF500A or ASF500B
------------------	--------------------

#### Working Environment

Working Temperature	-10°C~+50°C
---------------------	-------------

### Dimensions (mm[inch])

